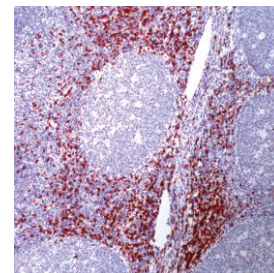




Rabbit Anti-Human CD8 Monoclonal Antibody (Clone SP16)

CATALOG #:

- M3160** 0.1 ml rabbit monoclonal antibody supplied as tissue culture supernatant in TBS/1% BSA buffer pH 7.5 with less than 0.1% sodium azide.
- M3162** 0.5 ml rabbit monoclonal antibody supplied as tissue culture supernatant in TBS/1% BSA buffer pH 7.5 with less than 0.1% sodium azide.
- M3164** 1.0 ml rabbit monoclonal antibody supplied as tissue culture supernatant in TBS/1% BSA buffer pH 7.5 with less than 0.1% sodium azide.
- M3161** 7.0 ml pre-diluted rabbit monoclonal antibody supplied as tissue culture supernatant in TBS/1% BSA buffer pH 7.6 with less than 0.1% sodium azide.



Human tonsil stained with anti-CD8 antibody

INTENDED USE:

For Research Use Only. Not for use in diagnostic procedures.

CLONE:

SP16

IMMUNOGEN:

Synthetic peptide corresponding to the C-terminus of alpha chain of the human CD8 molecule.

IG ISOTYPE:

Rabbit IgG

EPITOPE:

Not determined

MOLECULAR WEIGHT

32kDa

SPECIES REACTIVITY:

Human (tested). (See www.springbio.com for information on species reactivity predicted by sequence homology.)

DESCRIPTION:

CD8 molecule consists of two chains, termed α and β chain, which are expressed as a disulphide-linked α/β heterodimer or as an α/α homodimer on T cell subset, thymocytes and NK cells. The majority of CD8+ T cells express CD8 as α/β heterodimer. CD8 functions as a coreceptor in concert with TCR for binding the MHC class I/peptide complex. The HIV-2 envelope glycoprotein binds CD8 α chain (but not β chain).

APPLICATIONS:

Immunohistochemistry (IHC)

IHC PROCEDURE:

Specimen Preparation: Formalin-fixed, paraffin-embedded tissues are suitable for use with this primary antibody.

Deparaffinization: Deparaffinize slides using xylene or xylene alternative and graded alcohols.

Antibody Dilution: If using the concentrate format of this product, dilute the antibody 1:100. The dilutions are estimates; actual results may differ because of variability in methods and protocols.

Antigen Retrieval: Boil tissue section in 10mM citrate buffer, pH 6.0 for 10 min followed by cooling at room temperature for 20 min.

Primary Antibody Incubation: Incubate for 30 minutes at room temperature.

Slide Washing: Slides must be washed in between steps. Rinse slides with PBS/0.05% Tween.

Visualization: Detect the antibody as instructed by the instructions provided with the visualization system.

POSITIVE CONTROL:

Tonsil

CELLULAR LOCALIZATION:

Membrane

STORAGE & STABILITY

Store at 2-8°C. Do not freeze. The user must validate any other storage conditions. When properly stored, the reagent is stable to the date indicated on the label. Do not use the reagent beyond the expiration date.

There are no definitive signs to indicate instability of this product; therefore, positive and negative controls should be tested simultaneously with unknown specimens.

If unexpected results are observed which cannot be explained by variations in laboratory procedures and a problem with the reagent is suspected, contact Technical Support at spring.tech@ventana.roche.com.

WARNINGS & PRECAUTIONS:

1. Avoid contact of reagents with eyes and mucous membranes. If reagents come into contact with sensitive areas, wash with copious amounts of water.
2. This product is harmful if swallowed.
3. Consult local or state authorities with regard to recommended method of disposal.
4. Avoid microbial contamination of reagents.